



**REGIONAL SPECIALISED METEOROLOGICAL CENTRE-TROPICAL CYCLONES, NEW DELHI
TROPICAL WEATHER OUTLOOK**

DEMS-RSMC TROPICAL CYCLONES NEW DELHI DATED 20.08.2020

TROPICAL WEATHER OUTLOOK FOR NORTH INDIAN OCEAN (THE BAY OF BENGAL AND ARABIAN SEA) VALID FOR NEXT 120 HOURS ISSUED AT 0900 UTC OF 20.08.2020 BASED ON 0300 UTC OF 20.08.2020. (RECTIFIED)

BAY OF BENGAL:

YESTERDAY'S LOW PRESSURE AREA OVER NORTH BAY OF BENGAL & NEIGHBOURHOOD MOVED INLAND AND LAY AS A WELL MARKED LOW PRESSURE AREA (WML) OVER NORTH COASTAL ODISHA (INDIA) AT 0000 UTC OF TODAY, THE 20TH AUGUST 2020. IT LAY AS A WML OVER NORTH INTERIOR ODISHA AND ADJOINING JHARKHAND AT 0300 UTC OF TODAY. IT IS VERY LIKELY TO MOVE NEARLY WESTWARDS ACROSS CHHATTISGARH AND MADHYA PRADESH GRADUALLY DURING NEXT 3-4 DAYS.

A FRESH LOW PRESSURE AREA IS LIKELY TO DEVELOP OVER NORTHWEST BAY OF BENGAL & NEIGHBOURHOOD AROUND 23RD AUGUST, 2020.

SCATTERED LOW AND MEDIUM CLOUDS WITH EMBEDDED INTENSE TO VERY INTENSE CONVECTION LAY OVER NORTH AND WESTCENTRAL & ADJOINING SOUTHWEST BAY OF BENGAL. SCATTERED LOW AND MEDIUM CLOUDS WITH EMBEDDED ISOLATED MODERATE TO INTENSE CONVECTION LAY OVER EASTCENTRAL BAY OF BENGAL AND GULF OF MARTABAN.. SCATTERED LOW AND MEDIUM CLOUDS WITH EMBEDDED WEAK TO MODERATE CONVECTION LAY OVER SOUTH ANDAMAN SEA.

PROBABILITY OF CYCLOGENESIS DURING NEXT 120 HRS:

24 HOURS	24-48 HOURS	48-72 HOURS	72-96 HOURS	96-120 HOURS
NIL	NIL	NIL	NIL	NIL

ARABIAN SEA:

SCATTERED LOW AND MEDIUM CLOUDS WITH EMBEDDED MODERATE TO INTENSE CONVECTION LAY OVER NORTHEAST ARABIAN SEA OFF GUJARAT COAST & GULF OF CAMBAY. SCATTERED LOW AND MEDIUM CLOUDS WITH EMBEDDED WEAK TO MODERATE CONVECTION LAY OVER CENTRAL AND ADJOINING SOUTHEAST ARABIAN SEA.

PROBABILITY OF CYCLOGENESIS DURING NEXT 120 HRS:

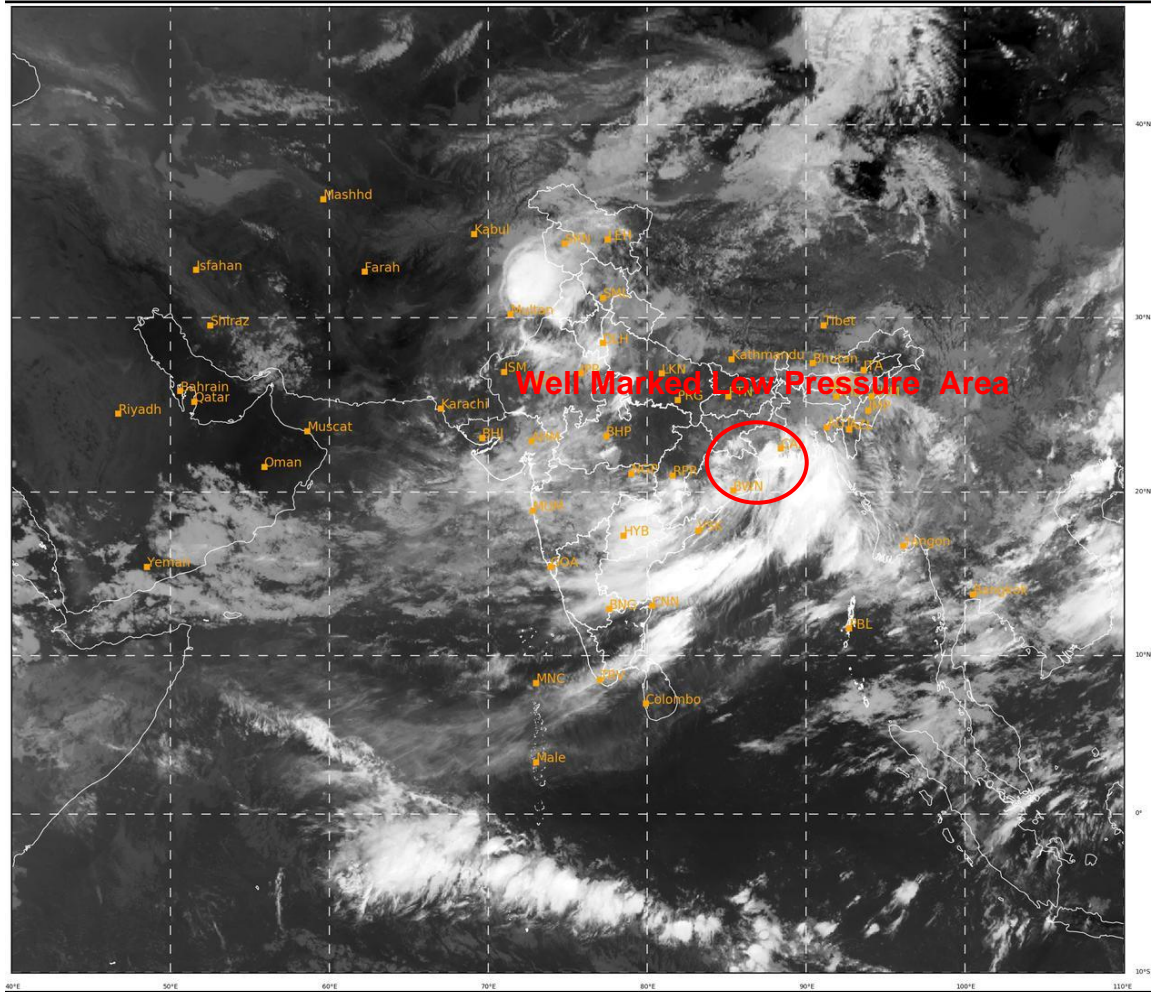
24 HOURS	24-48 HOURS	48-72 HOURS	72-96 HOURS	96-120 HOURS
NIL	NIL	NIL	NIL	NIL

REMARKS: NIL

PROBABILITY OF CYCLOGENESIS (FORMATION OF DEPRESSION)
NIL: 0%, LOW: 1-25%, FAIR: 26-50%, MODERATE: 51-75% AND HIGH: 76-100%

SAT : INSAT-3D IMG
IMG_TIR1 10.8 um
LIC Mercator

20-08-2020/(0300 to 0327) GMT
20-08-2020/(0830 to 0857) IST



416

934

IMD, DELHI

PROBABILITY OF CYCLOGENESIS (FORMATION OF DEPRESSION)
NIL: 0%, LOW: 1-25%, FAIR: 26-50%, MODERATE: 51-75% AND HIGH: 76-100%